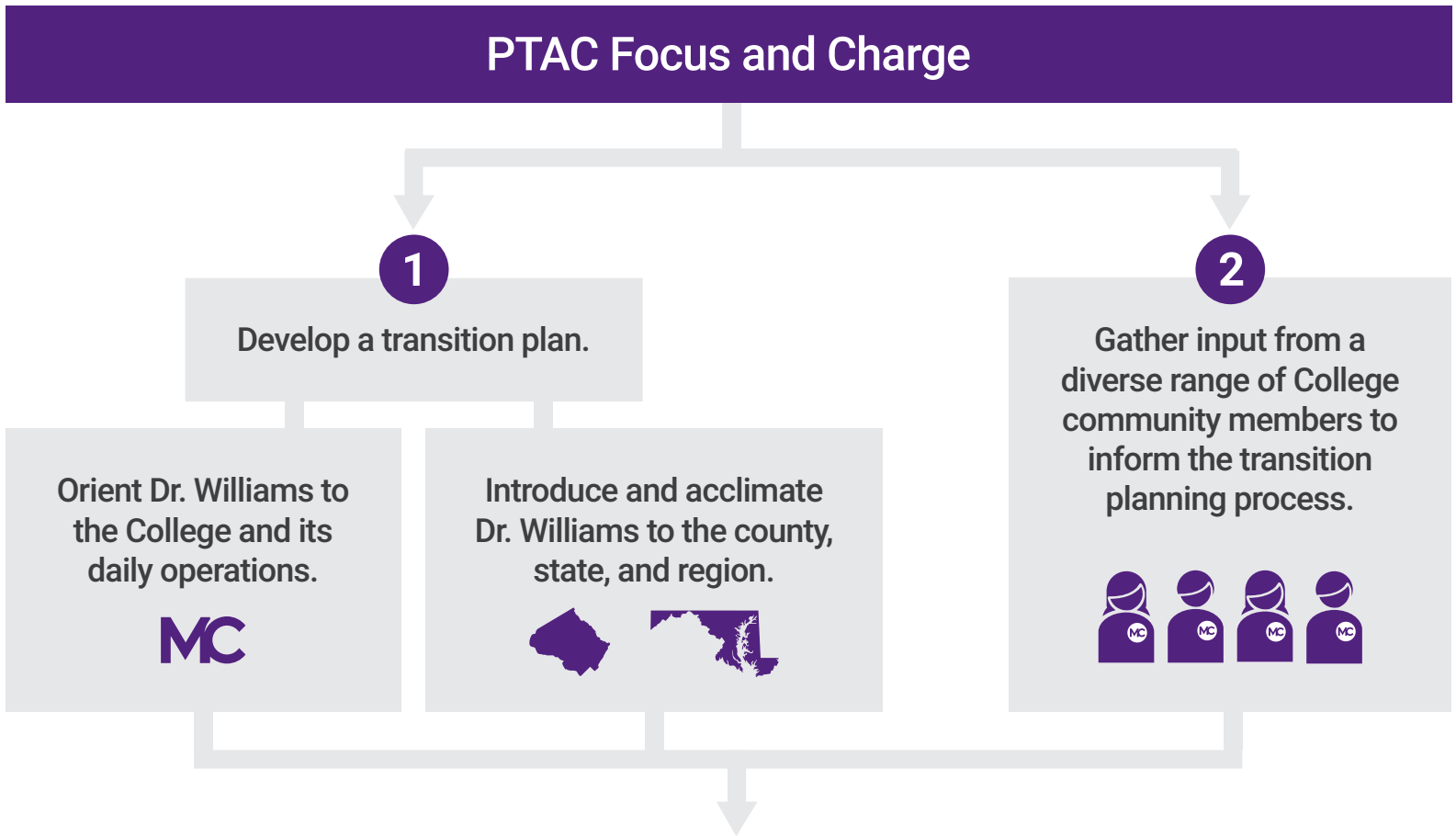


Presidential Transition Advisory Committee (PTAC)

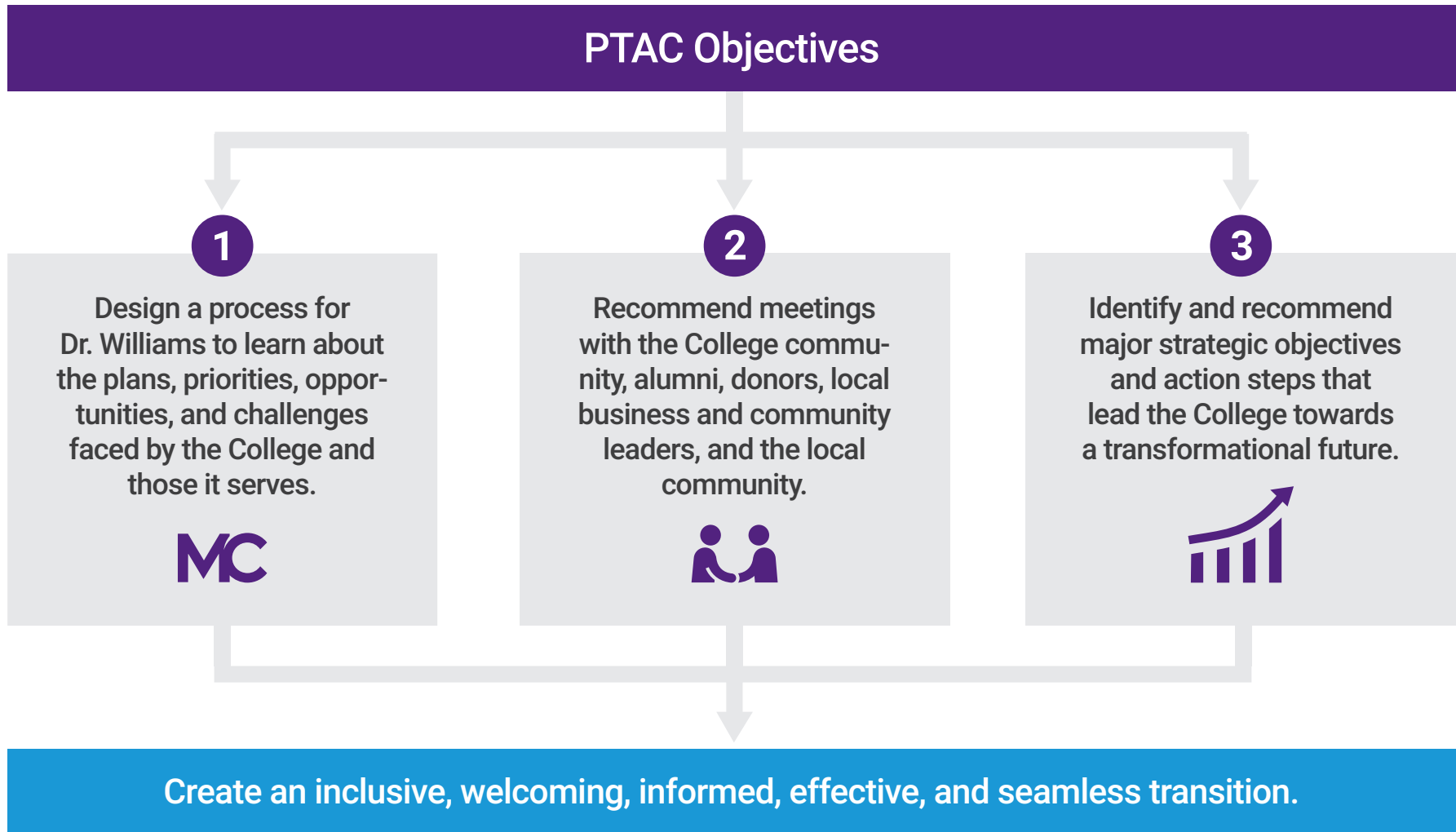
Presidential Transition Work Model (April–September 2022)



Create an inclusive, welcoming, informed, and effective transition. Advise and support Dr. Williams.

Presidential Transition Advisory Committee (PTAC)

Presidential Transition Work Model (April–September 2022)



Presidential Transition Advisory Committee (PTAC)

Presidential Transition Work Model (April–September 2022)

Transition Plan Development Framework

Develop a transition plan that addresses these key areas.

1

Recognize and build upon current successes. Develop new successes by pursuing traditional needs while seeking transformational opportunities.

2

Remain committed to students via innovative, data-informed, and equitable approaches.

3

Appreciate and support faculty and staff.

4

Remain dedicated to social justice, radical inclusion, racial equity, and anti-racism.

5

Remain committed to external communities and partners. Contribute to the region's economic vitality and drive economic mobility.

Presidential Transition Advisory Committee (PTAC)

Presidential Transition Work Model (April–September 2022)

